

Sedimentsundersøgelse. Furesø 1997

Data og oversigtskort.

Furesø 1997

Station ID	Dybde m	Total-P		Glødetab		Tørstof		Massefylde		Massefylde		Tørstof		Total-P	
		0-10 cm mg/g TS	10-20 cm mg/g TS	0-10 cm mg/g TS	10-20 cm mg/g TS	0-10 cm mg/g VV	10-20 cm mg/g VV	mineralsk g/cm3	organisk g/cm3	0-10 cm g/cm3	10-20 cm g/cm3	0-10 cm g/cm3	10-20 cm g/cm3	0-10 cm mg/cm2	10-20 cm mg/cm2
1	10,0	0,712	0,512	67,7	90,2	320,0	287,0	2,6	1,05	1,51	1,46	0,212	0,197	1,507	1,007
2	24,5	1,720	1,580	174,0	137,0	117,0	185,0	2,6	1,05	1,18	1,30	0,099	0,143	1,698	2,254
3	22,0	1,810	0,846	181,0	130,0	123,0	198,0	2,6	1,05	1,19	1,32	0,103	0,150	1,864	1,271
4	28,0	2,300	1,190	179,0	154,0	114,0	164,0	2,6	1,05	1,18	1,26	0,097	0,130	2,222	1,545
5	28,5	2,430	2,140	201,0	188,0	93,9	142,0	2,6	1,05	1,15	1,23	0,082	0,116	1,989	2,474
6	28,0	1,680	1,410	203,0	161,0	52,9	157,0	2,6	1,05	1,08	1,25	0,049	0,125	0,824	1,768
7	23,7	2,950	1,000	135,0	96,1	116,0	237,0	2,6	1,05	1,18	1,38	0,098	0,172	2,891	1,718
8	19,0	3,540	0,616	94,4	50,0	81,0	371,0	2,6	1,05	1,13	1,59	0,072	0,233	2,542	1,434
9	10,0	0,442	0,267	38,2	26,2	402,0	519,0	2,6	1,05	1,64	1,83	0,245	0,284	1,081	0,757
10	26,0	1,720	2,160	201,0	175,0	104,0	100,0	2,6	1,05	1,16	1,16	0,089	0,086	1,538	1,859
11	33,5	2,010	3,180	200,0	173,0	66,6	126,0	2,6	1,05	1,10	1,20	0,060	0,105	1,215	3,331
12	24,5	1,540	0,741	173,0	285,0	73,8	240,0	2,6	1,05	1,11	1,39	0,066	0,173	1,020	1,284
13	37,0	2,180	2,890	204,0	184,0	72,9	135,0	2,6	1,05	1,11	1,22	0,066	0,111	1,429	3,205
14	36,0	2,230	1,920	200,0	157,0	51,5	166,0	2,6	1,05	1,08	1,27	0,048	0,131	1,067	2,516
15	26,5	1,780	0,690	166,0	218,0	48,3	256,0	2,6	1,05	1,07	1,41	0,045	0,182	0,802	1,252
16	22,8	2,410	0,633	88,6	63,5	125,0	328,0	2,6	1,05	1,20	1,52	0,104	0,215	2,513	1,361
17	16,0	0,746	0,359	14,7	17,3	576,0	613,0	2,6	1,05	1,92	1,98	0,300	0,309	2,236	1,111
18	28,0	1,740	1,480	184,0	147,0	94,2	171,0	2,6	1,05	1,15	1,27	0,082	0,134	1,428	1,986
19	25,0	1,740	0,955	188,0	144,0	58,4	182,0	2,6	1,05	1,09	1,29	0,054	0,141	0,934	1,345
20	21,7	2,970	0,989	92,6	68,2	235,0	348,0	2,6	1,05	1,38	1,56	0,171	0,224	5,075	2,211
21	17,0	0,740	0,318	32,2	16,4	326,0	613,0	2,6	1,05	1,52	1,98	0,214	0,309	1,586	0,984
22	23,6	2,120	0,636	93,5	81,3	227,0	302,0	2,6	1,05	1,36	1,48	0,167	0,204	3,532	1,295
23	23,0	1,990	1,000	106,0	101,0	184,0	238,0	2,6	1,05	1,29	1,38	0,142	0,172	2,831	1,723
24	19,0	1,070	0,522	62,6	52,6	248,0	345,0	2,6	1,05	1,40	1,55	0,178	0,222	1,900	1,160
25	22,0	1,560	0,905	143,0	117,0	136,0	204,0	2,6	1,05	1,22	1,33	0,112	0,154	1,745	1,391
26	21,5	2,390	0,934	104,0	93,2	187,0	140,0	2,6	1,05	1,30	1,22	0,144	0,114	3,442	1,068
27	24,0	1,130	0,698	143,0	116,0	97,3	136,0	2,6	1,05	1,15	1,22	0,084	0,112	0,953	0,779
28	25,5	1,440	0,693	167,0	123,0	62,1	132,0	2,6	1,05	1,10	1,21	0,057	0,109	0,817	0,755
29	22,7	1,480	0,660	196,0	133,0	34,8	111,0	2,6	1,05	1,05	1,18	0,033	0,094	0,492	0,621
30	19,6	1,330	0,592	137,0	76,0	44,1	77,1	2,6	1,05	1,07	1,12	0,041	0,069	0,550	0,406
31	14,7	1,020	0,439	77,2	45,9	60,4	375,0	2,6	1,05	1,09	1,60	0,055	0,234	0,563	1,029
32	13,6	0,688	0,343	109,0	41,0	381,0	407,0	2,6	1,05	1,61	1,65	0,237	0,246	1,629	0,845
Mean	23,0	1,738	1,041	136,1	114,4	153,5	250,2			1,24	1,40	0,113	0,169	1,747	1,492

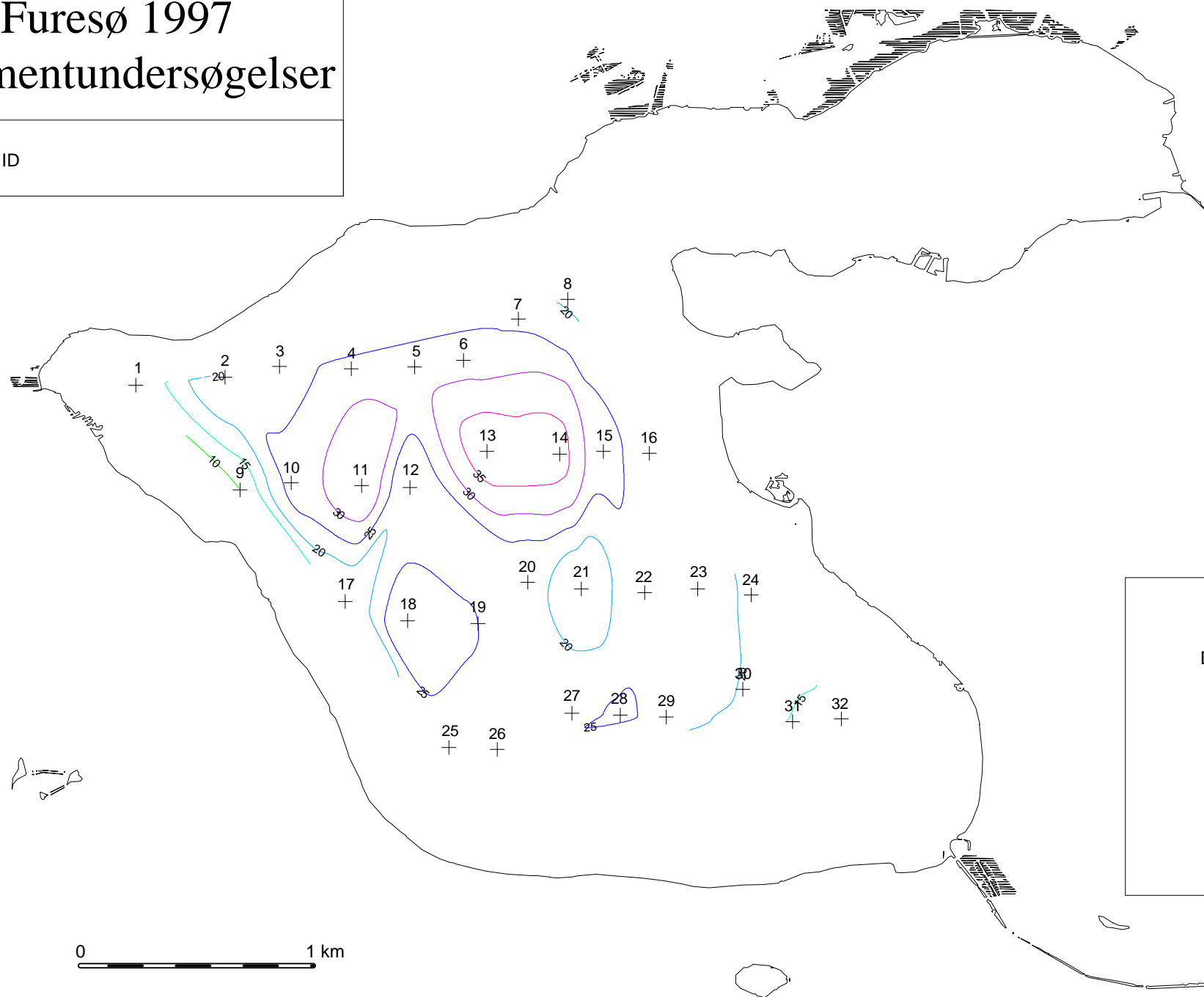
Hele prøveområdet	310	Totalfosfor
ha		tons
0-10 cm	54,2	
10-20cm	46,3	

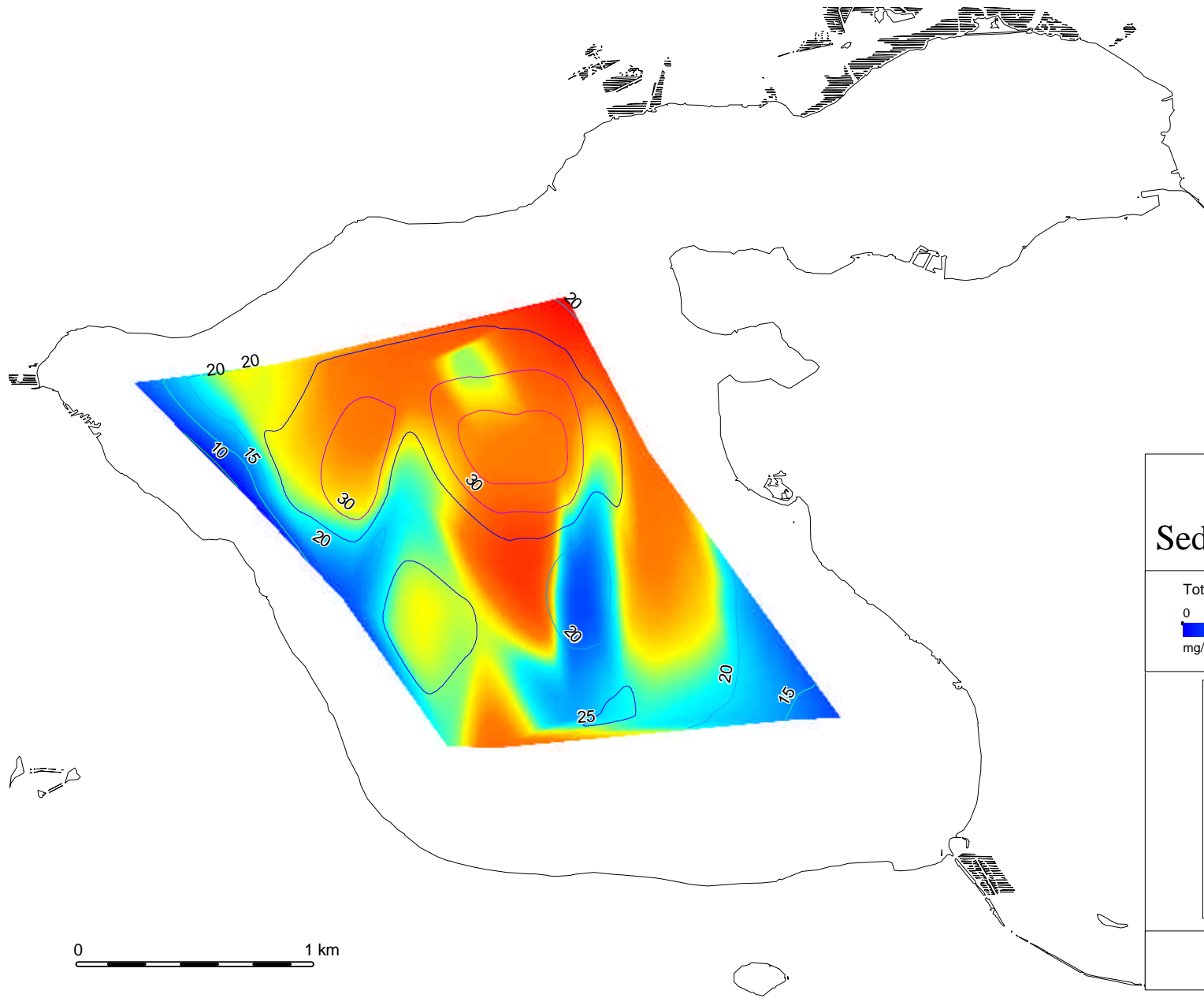
Massefylder af tørstof	g/cm3
mineralsk sediment	2,6
organisk sediment	1,05

Furesø 1997

Sedimentundersøgelser

+ Station ID





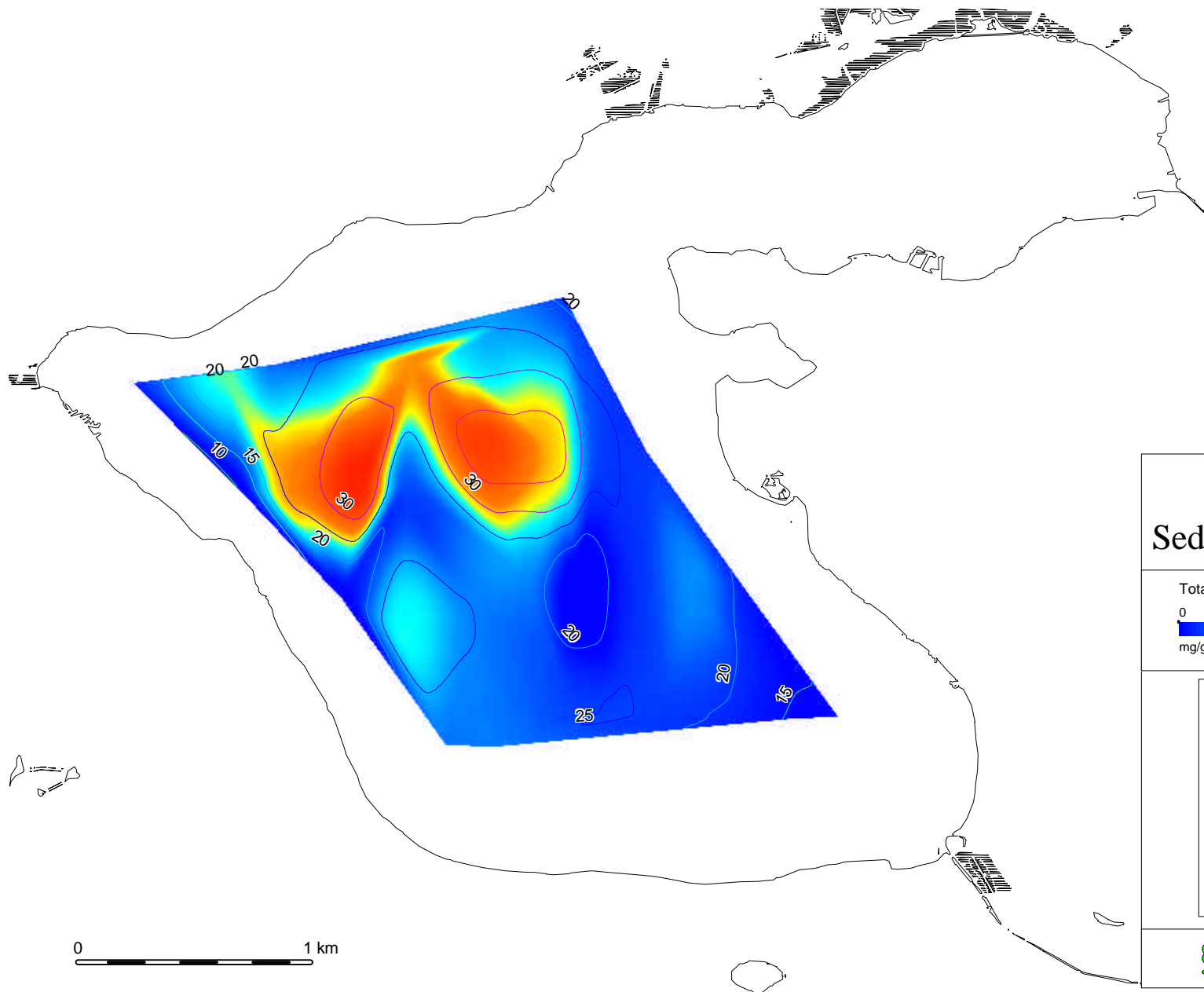
Furesø 1997 Sedimentundersøgelser

Total P 0-10 cm
0 1,2 2 2,7 3,5
mg/g tørstof

Dybde i meter

- 40
- 35
- 30
- 25
- 20
- 15
- 10
- 5
- 0

BE Bio/consult as



Furesø 1997 Sedimentundersøgelser

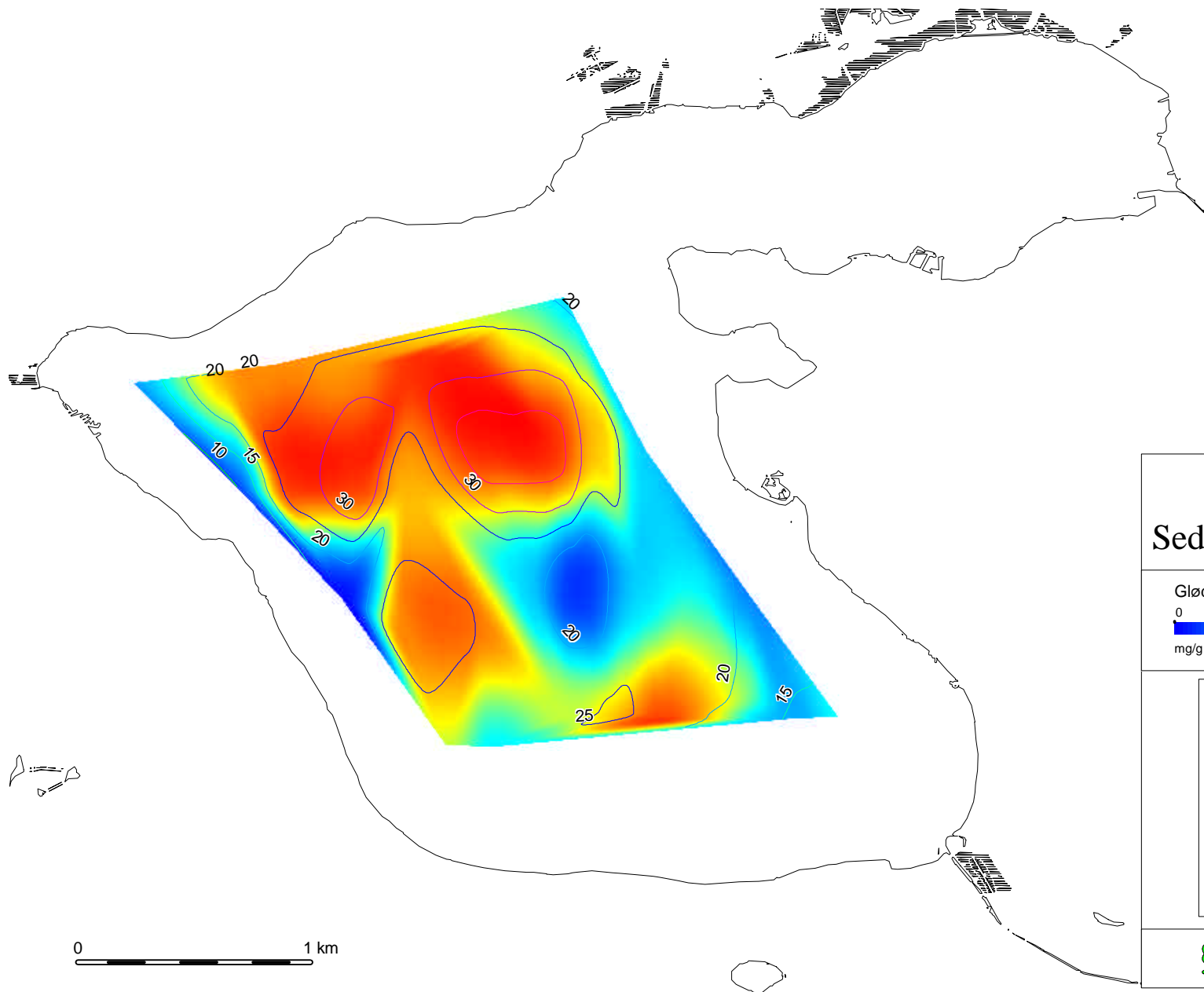
Total P 10-20 cm
0 1,2 2 2,7 3,5
mg/g tørstof

Dybde i meter

- 40
- 35
- 30
- 25
- 20
- 15
- 10
- 5
- 0

BE Bio/consult as





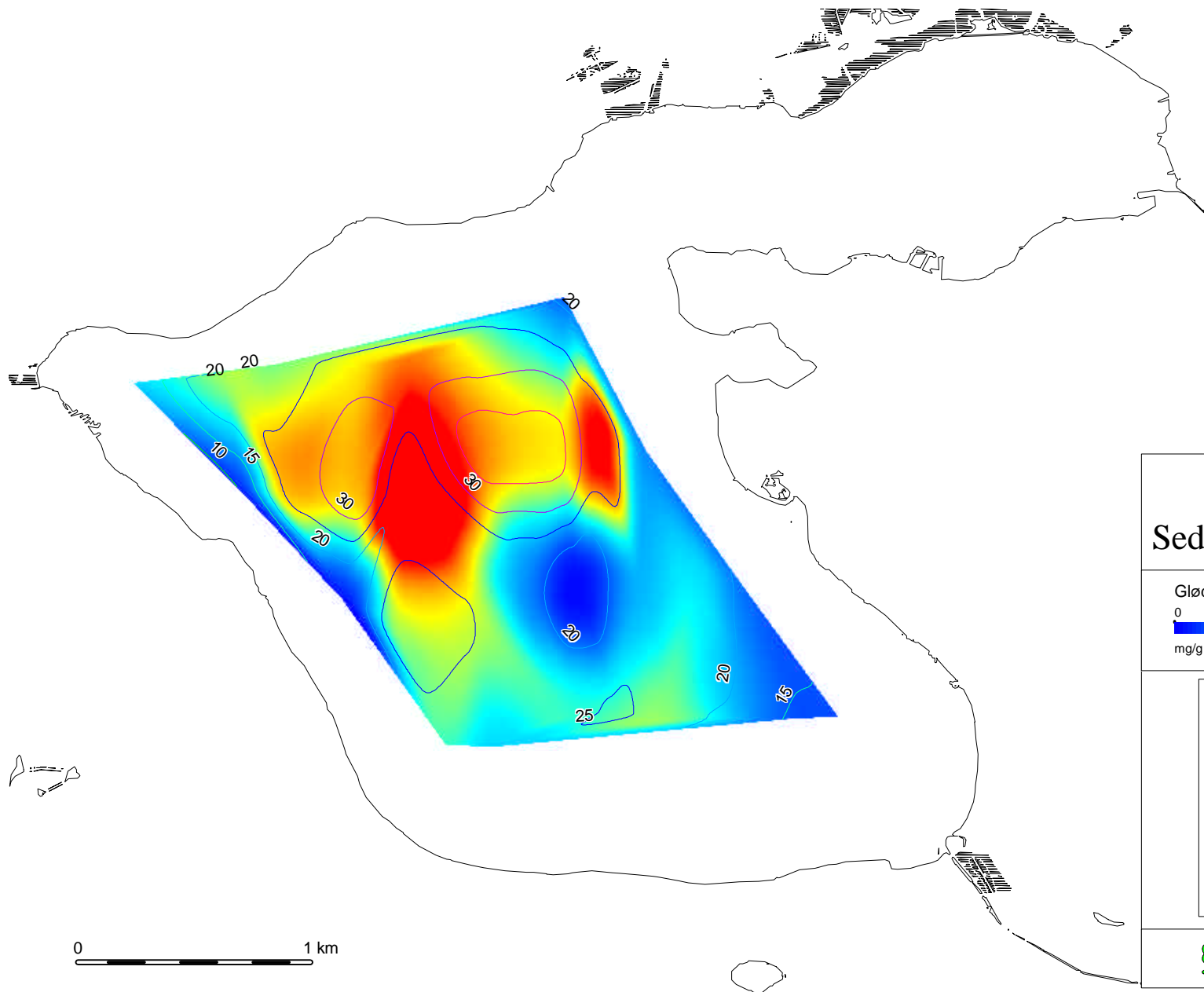
Furesø 1997 Sedimentundersøgelser

Glødetab 0-10 cm
0 80 150 215 285
mg/g tørstof

Dybde i meter

- 40
- 35
- 30
- 25
- 20
- 15
- 10
- 5
- 0

BE Bio/consult as



Furesø 1997 Sedimentundersøgelser

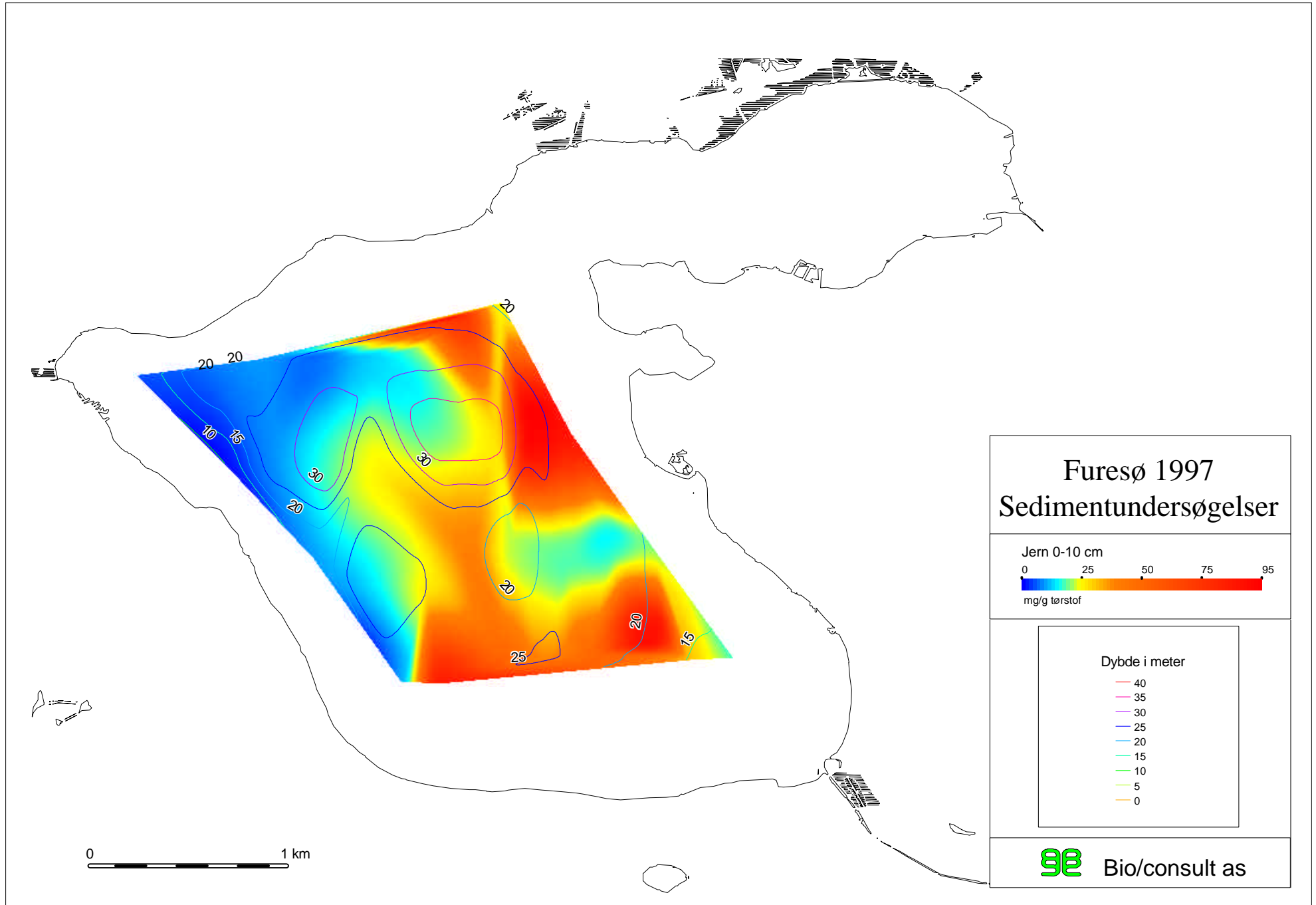
Glødetab 10-20 cm
0 80 150 215 285
mg/g tørstof

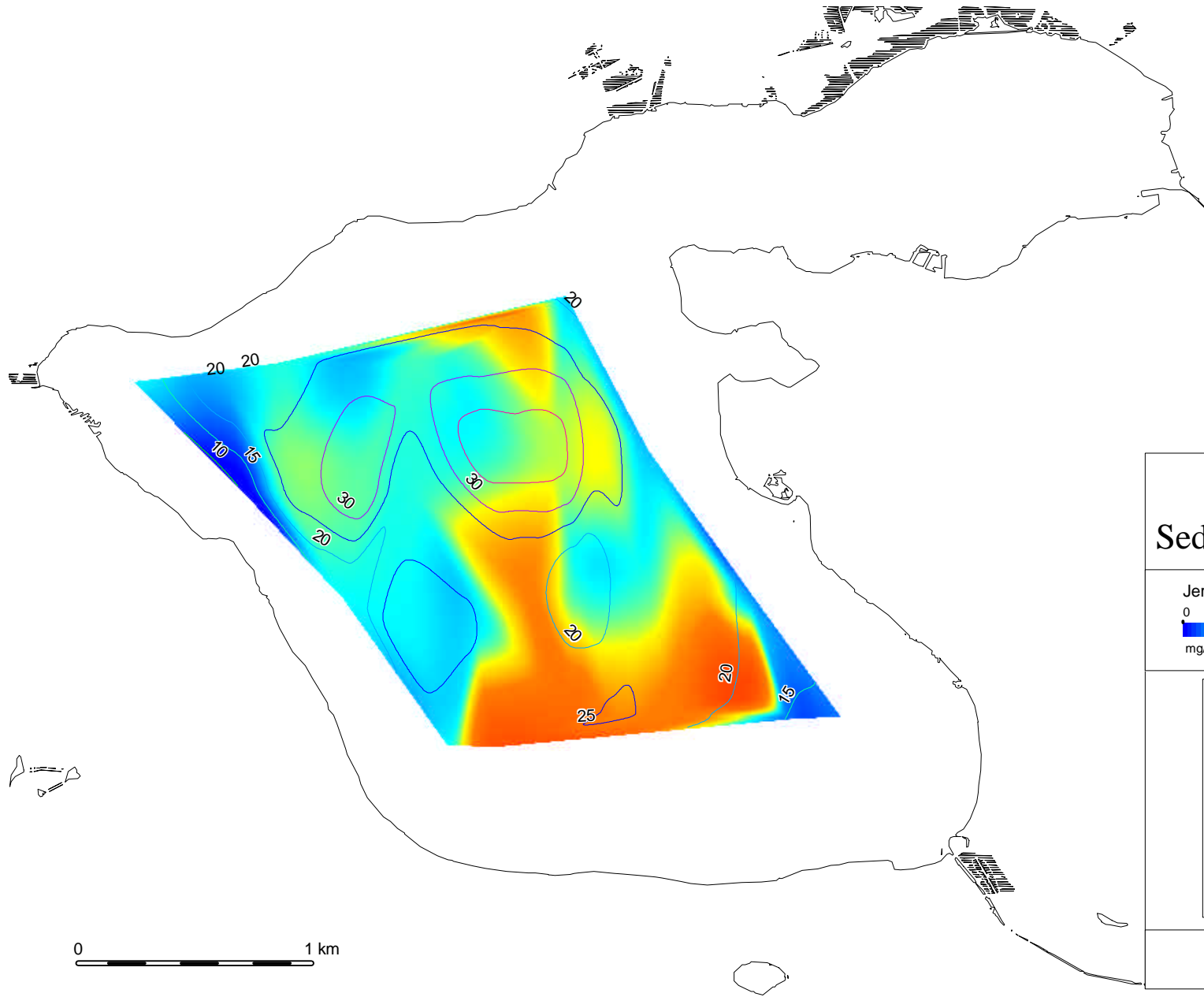
Dybde i meter

- 40
- 35
- 30
- 25
- 20
- 15
- 10
- 5
- 0

BE Bio/consult as

0 1 km





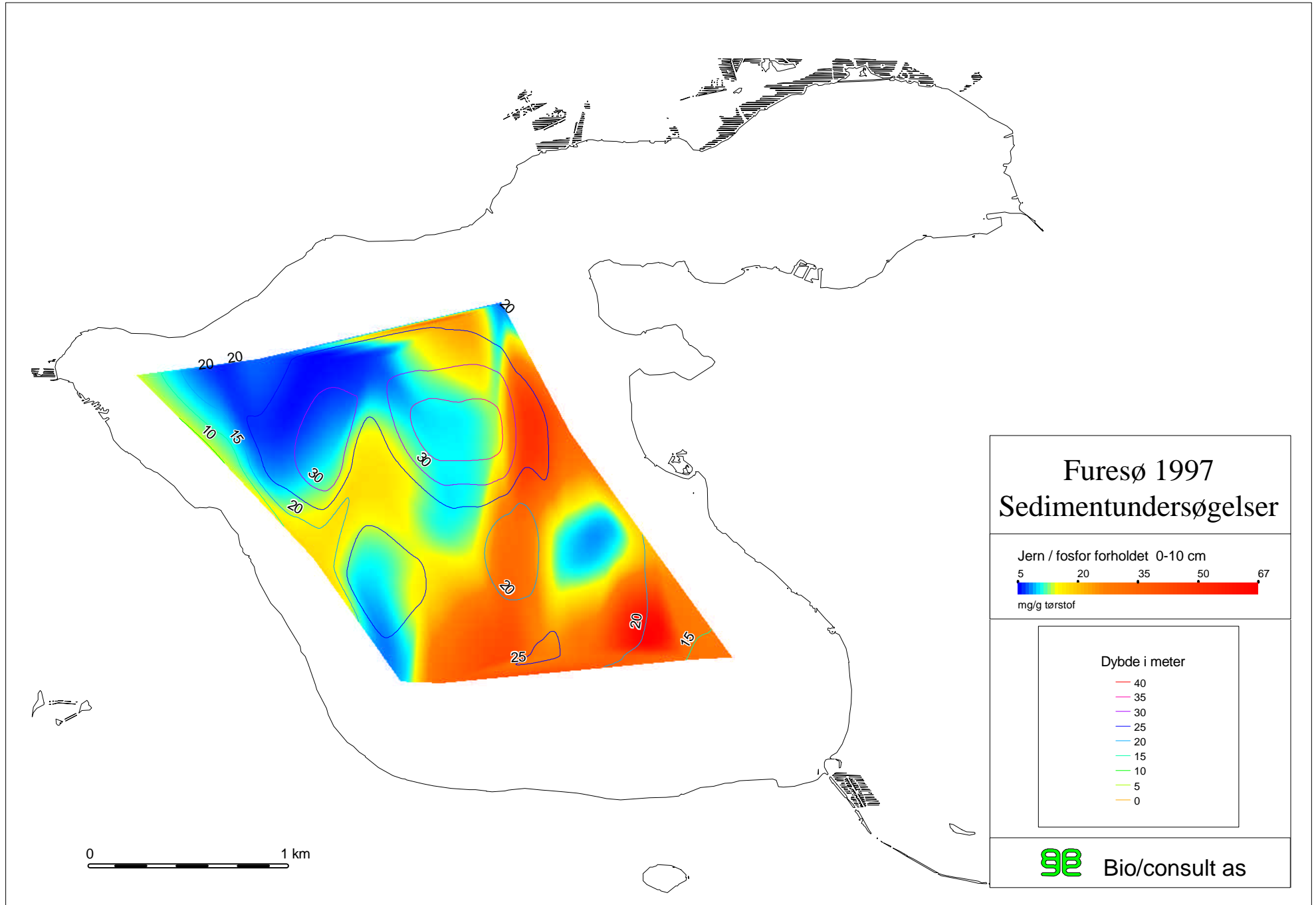
Furesø 1997 Sedimentundersøgelser

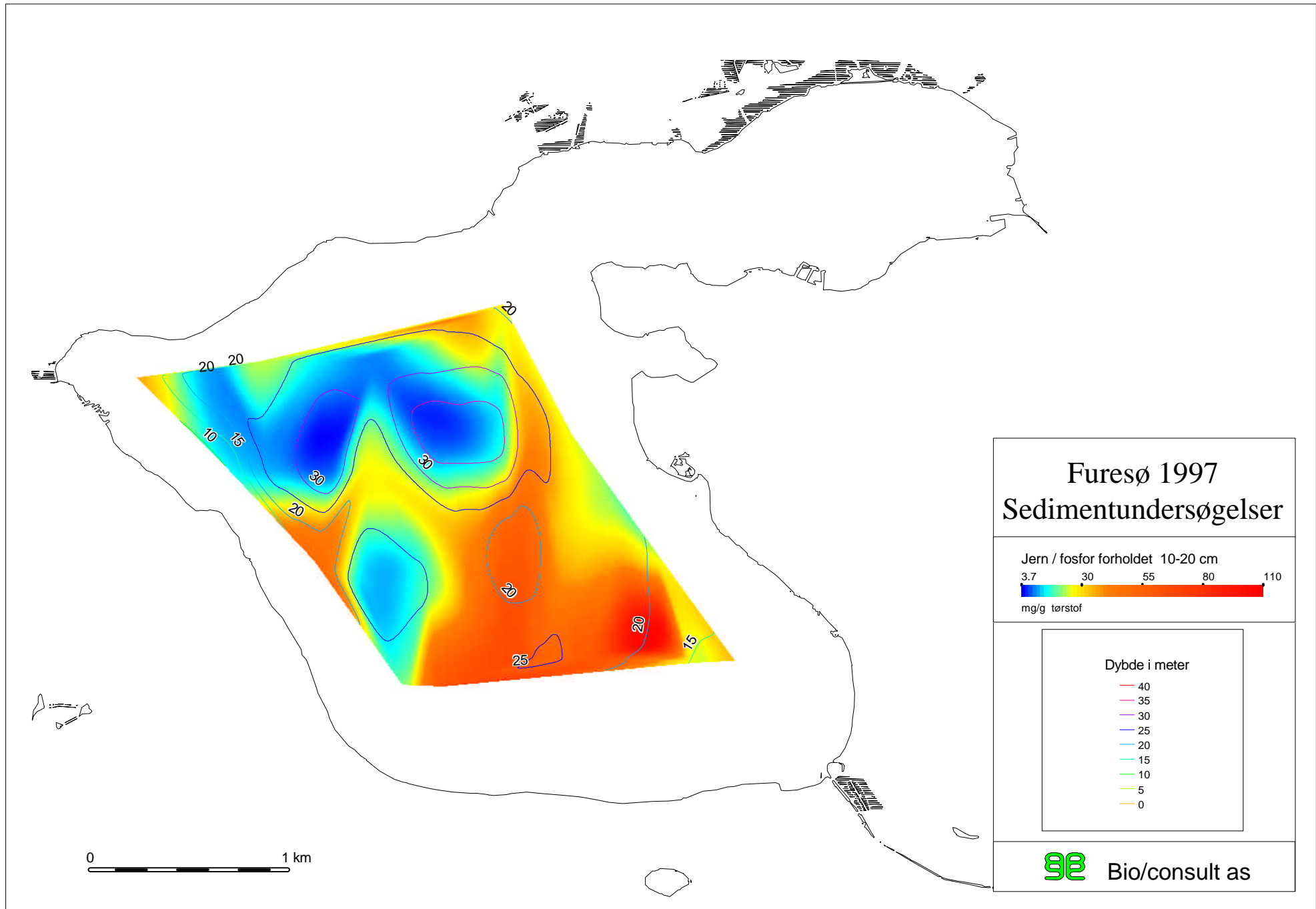
Jern 10-20 cm
0 25 50 75 95
mg/g tørstof

Dybde i meter

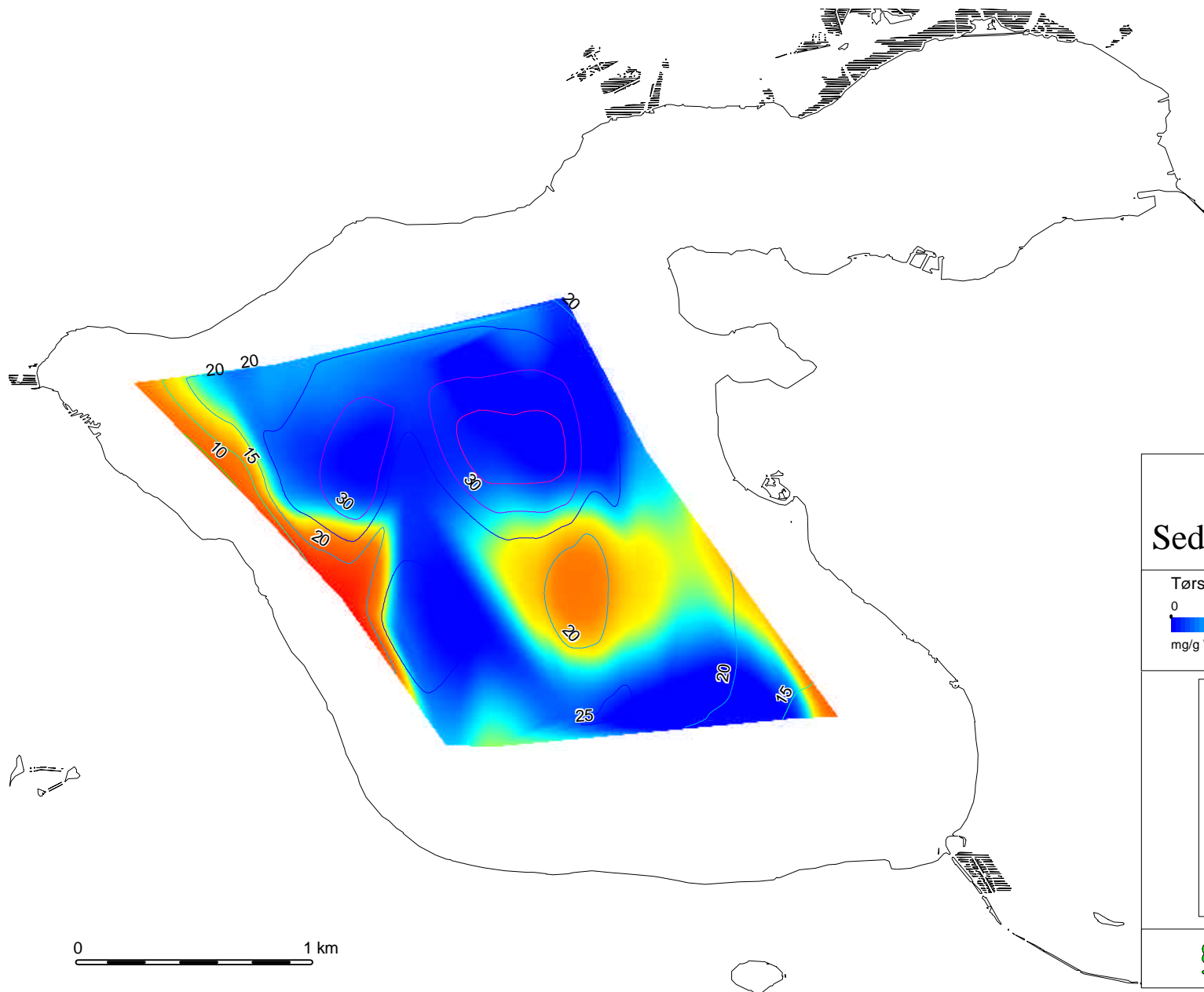
- 40
- 35
- 30
- 25
- 20
- 15
- 10
- 5
- 0

BE Bio/consult as





tor10.wor



Furesø 1997 Sedimentundersøgelser

Tørstof 0-10 cm
0 200 340 475 620
mg/g W

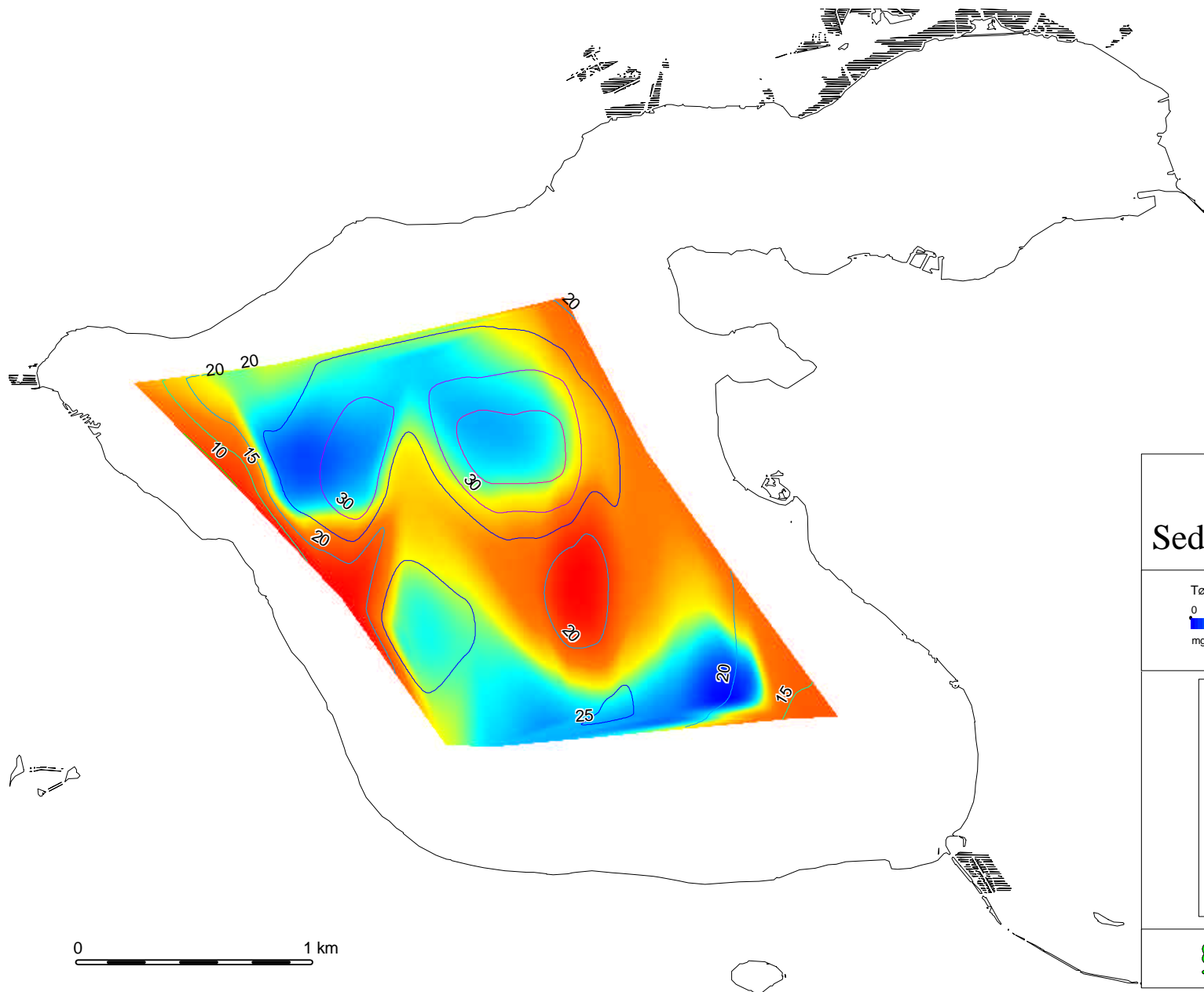
Dybde i meter

- 40
- 35
- 30
- 25
- 20
- 15
- 10
- 5
- 0

BE Bio/consult as

0 1 km

tor20.wor



Furesø 1997 Sedimentundersøgelser

Tørstof 10-20 cm
0 200 340 475 620
mg/g W

Dybde i meter

- 40
- 35
- 30
- 25
- 20
- 15
- 10
- 5
- 0

BE Bio/consult as

0 1 km